

# GEODIFFUSION: TEXT-PROMPTED GEOMETRIC CONTROL FOR OBJECT DETECTION DATA GENERATION

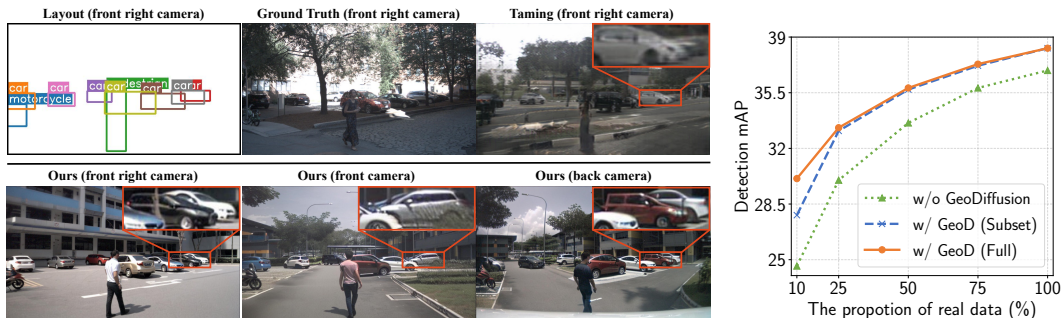
Kai Chen<sup>1\*</sup>, Enze Xie<sup>2\*</sup>, Zhe Chen<sup>3</sup>, Yibo Wang<sup>4</sup>, Lanqing Hong<sup>2†</sup>,  
Zhenguo Li<sup>2</sup>, Dit-Yan Yeung<sup>1</sup>

<sup>1</sup>Hong Kong University of Science and Technology <sup>2</sup>Huawei Noah’s Ark Lab

<sup>3</sup>Nanjing University <sup>4</sup>Tsinghua University

kai.chen@connect.ust.hk, {xie.enze, honglanqing, li.zhenguo}@huawei.com

chenzhe98@smail.nju.edu.cn, wyb22@mails.tsinghua.edu.cn, dyyeung@cse.ust.hk



(a) **Qualitative comparison** between our GEODIFFUSION and the state-of-the-art layout-to-image (L2I) generation method (Jahn et al., 2021). See more qualitative comparisons in Fig. 8 and 9.

(b) **Curve of mAP** with respect to the portion (%) of real data usage (c.f. Tab. 8).

Figure 1: (a) GEODIFFUSION can generate object detection data by encoding different geometric conditions (e.g., **bounding boxes** (bottom left) and **camera views** (bottom middle & right)) with a unified architecture. (b) **For the first time**, we demonstrate that L2I-generated images can benefit the training of object detectors (Ren et al., 2015), especially under annotation-scarce circumstances.

## ABSTRACT

Diffusion models have attracted significant attention due to the remarkable ability to create content and generate data for tasks like image classification. However, the usage of diffusion models to generate the high-quality object detection data remains an underexplored area, where not only image-level perceptual quality but also geometric conditions such as bounding boxes and camera views are essential. Previous studies have utilized either copy-paste synthesis or layout-to-image (L2I) generation with specifically designed modules to encode semantic layouts. In this paper, we propose GEODIFFUSION, a simple framework that can flexibly translate various geometric conditions into text prompts and empower pre-trained text-to-image (T2I) diffusion models for high-quality detection data generation. Unlike previous L2I methods, our GEODIFFUSION is able to encode not only the bounding boxes but also extra geometric conditions such as camera views in self-driving scenes. Extensive experiments demonstrate GEODIFFUSION outperforms previous L2I methods while maintaining  $4\times$  training time faster. To the best of our knowledge, this is the first work to adopt diffusion models for layout-to-image generation with geometric conditions and demonstrate that L2I-generated images can be beneficial for improving the performance of object detectors.

## 1 INTRODUCTION

The cost of real data collection and annotation has been a longstanding problem in the field of deep learning. As a more cost-effective alternative, data generation techniques have been investigated for potential performance improvement (Perez & Wang, 2017; Bowles et al., 2018). However, effectiveness of such techniques has not met the expectation, mainly limited by the quality of generated data.

\*Equal contribution. †Corresponding author.

Project Page: <https://kaichen1998.github.io/projects/geodiffusion/>.

Recently, diffusion models (DMs) (Ho et al., 2020; Nichol & Dhariwal, 2021) have emerged as one of the most popular generative models, owing to the remarkable ability to create content. Moreover, as demonstrated by He et al. (He et al., 2022), DMs can generate high-quality images to improve the performance of classification models. However, the usage of DMs to generate data for complex perception tasks (e.g., object detection (Caesar et al., 2020; Han et al., 2021; Li et al., 2022)) has been rarely explored, which requires to consider about not only image-level perceptual quality but also geometric controls (e.g., bounding boxes and camera views). Thus, there is a need to investigate how to effectively utilize DMs for generating high-quality data for such perception tasks.

Existing works primarily utilize two manners to employ generative models for *controllable* detection data generation: 1) copy-paste synthesis (Dvornik et al., 2018; Zhao et al., 2022) and 2) layout-to-image (L2I) generation (Sun & Wu, 2019; Zhao et al., 2019). Copy-paste synthesis involves by generating the foreground objects and placing them on a pre-existing background image. Although proven beneficial for detectors, it only combines different parts of images instead of generating a complete scene, leading to less realistic images. L2I generation, on the other hand, adopts classical generative models (VAE (Kingma & Welling, 2013) and GAN (Goodfellow et al., 2014)), to directly generate realistic detection data conditional on semantic layouts. However, L2I generation relies on specifically designed modules (e.g., RoI Align (Zhao et al., 2019; He et al., 2021) and layout attention (Li et al., 2023a; Cheng et al., 2023)) to encode layouts, limiting its flexibility to incorporate extra geometric conditions such as camera views. Therefore, the question arises: *Can we utilize a pre-trained powerful text-to-image (T2I) diffusion model to encode various geometric conditions for high-quality detection data generation?*

Inspired by recent advancement of language models (LM) (Touvron et al., 2023; Chen et al., 2023b), we propose GEODIFFUSION, a simple framework to translate different geometric conditions as a “foreign language” via text prompts to empower pre-trained text-to-image diffusion models (Rombach et al., 2022) for high-quality object detection data generation. Different from the previous L2I methods which can only encode bounding boxes, our work can encode various additional geometric conditions flexibly benefiting from translating conditions into text prompts (e.g., GEODIFFUSION is able to control image generation conditioning on camera views in self-driving scenes). Considering the extreme imbalance among foreground and background regions, we further propose a foreground re-weighting mechanism which adaptively assigns higher loss weights to foreground regions while considering the area difference among foreground objects at the same time. Despite its simplicity, GEODIFFUSION can generate highly realistic images consistent with the geometric layouts, significantly surpassing previous L2I methods (+21.85 FID and +27.1 mAP). **For the first time**, we demonstrate generated images of L2I models can be beneficial for the training of object detectors, particularly in annotation-scarce scenarios. Moreover, GEODIFFUSION can generate novel unseen images for simulation (Fig. 4) and support sophisticated image inpainting requests (Fig. 5).

The main contributions of this work contain three parts:

1. We propose GEODIFFUSION, an embarrassing simple framework to integrate geometric controls into pre-trained diffusion models for detection data generation via text prompts.
2. With extensive experiments, we demonstrate that GEODIFFUSION outperforms previous L2I methods by a significant margin while maintaining highly efficient (approximately 4× training acceleration).
3. For the first time, we demonstrate that the generated images of layout-to-image models can be beneficial to training object detectors, especially for the annotation-scarce circumstances in object detection datasets.

## 2 RELATED WORK

**Diffusion models.** Recent progress in generative models has witnessed the success of diffusion models (Ho et al., 2020; Song et al., 2020), which generates images through a progressive denoising diffusion procedure starting from a normal distributed random sample. These models have shown exceptional capabilities in image generation and potential applications, including text-to-image synthesis (Nichol et al., 2021; Ramesh et al., 2022), image-to-image translation (Saharia et al., 2022a;b), inpainting (Wang et al., 2022), and text-guided image editing (Nichol et al., 2021; Hertz et al., 2022). Given the impressive success, employing diffusion models to generate perception-centric training data holds significant promise for exploiting the boundaries of perceptual model capabilities.

Table 1: **Key differences between our GEODIFFUSION and existing works.** GEODIFFUSION can generate highly realistic detection data with flexible fine-grained text-prompted geometric control.

Paradigm	Realistic	Layout Control	Extra Geo. Control
Copy-paste (Zhao et al., 2022)	✗	✓	✗
Layout-to-image (Li et al., 2023a)	✓	✓	✗
Perception-based (Wu et al., 2023)	✓	✗	✗
<b>GeoDiffusion</b>	✓	✓	✓

**Copy-paste synthesis.** Considering that object detection models require a large amount of data, the replication of image samples, also known as copy-paste, has emerged as a straightforward way to improve data efficiency of object detection models. Nikita *et al.* (Dvornik et al., 2018) first introduce Copy-Paste as an effective augmentation for detectors. Simple Copy-Paste (Ghiasi et al., 2021) uses a simple random placement strategy and yields solid improvements. Recently, (Ge et al., 2022; Zhao et al., 2022) perform copy-paste synthesis by firstly generating foreground objects which are copied and pasted on a background image. Although beneficial for detectors, the synthesized images are: a) *not realistic*; b) *no controllable* on fine-grained geometric conditions (*e.g.*, camera views). Thus, we focus on integrating various geometric controls into pre-trained diffusion models.

**Layout-to-image generation** aims at taking a graphical input of a high-level layout and generating a corresponding photorealistic image. To address, LAMA (Li et al., 2021) designs a locality-aware mask adaption module to adapt the overlapped object masks during generation, while Taming (Jahn et al., 2021) demonstrates a conceptually simple model can outperform previous highly specialized systems when trained in the latent space. Recently, GLIGEN (Li et al., 2023a) introduces extra gated self-attention layers into pre-trained diffusion models for layout control, and LayoutDiffuse (Cheng et al., 2023) utilizes novel layout attention modules specifically designed for bounding boxes. The most similar with ours is ReCo (Yang et al., 2023), while GEODIFFUSION further 1) supports extra geometric controls purely with text prompts, 2) proposes the foreground prior re-weighting for better foreground object modeling and 3) demonstrates L2I-generated images can benefit object detectors.

**Perception-based generation.** Instead of conducting conditional generation given a specific input layout, perception-based generation aims at generating corresponding annotations simultaneously during the original unconditional generation procedure by adopting a perception head upon the pre-trained diffusion models. DatasetDM (Wu et al., 2023) learns a Mask2Former-style P-decoder upon a fixed Stable Diffusion model, while Li *et al.* (Li et al., 2023b) further propose a fusion module to support open-vocabulary segmentation. Although effective, perception-based methods 1) can hardly outperform directly combining pre-trained diffusion models with specialized open-world perception models (*e.g.*, SAM (Kirillov et al., 2023)), 2) solely rely on pre-trained diffusion models for image generation and cannot generalize to other domains (*e.g.*, driving scenes) and 3) support only textual-conditional generation, neither fine-grained geometric controls (*e.g.*, bounding boxes and camera views) nor sophisticated image editing requests (*e.g.*, inpainting).

### 3 METHOD

In this section, we first introduce the basic formulation of our *generalized layout-to-image* (GL2I) generation problem with geometric conditions and diffusion models (DMs) (Ho et al., 2020) in Sec. 3.1.1 and 3.1.2 separately. Then, we discuss how to flexibly encode the geometric conditions via text prompts to utilize pre-trained text-to-image (T2I) diffusion models (Rombach et al., 2022) and build our GEODIFFUSION in Sec. 3.2 and 3.3.

#### 3.1 PRELIMINARY

##### 3.1.1 GENERALIZED LAYOUT-TO-IMAGE GENERATION

Let  $L = (v, \{(c_i, b_i)\}_{i=1}^N)$  be a *geometric layout* with  $N$  bounding boxes, where  $c_i \in \mathcal{C}$  denotes the semantic class, and  $b_i = [x_{i,1}, y_{i,1}, x_{i,2}, y_{i,2}]$  represents locations of the bounding box (*i.e.*, top-left and bottom-right corners).  $v \in \mathcal{V}$  can be any extra *geometric conditions* associated with the layout. Without loss of generality, we take camera views as an example in this paper. Thus, the *generalized layout-to-image* generation aims at learning a  $\mathcal{G}(\cdot, \cdot)$  to generate images  $I \in \mathcal{R}^{H \times W \times 3}$  conditional on given geometric layouts  $L$  as  $I = \mathcal{G}(L, z)$ , where  $z \sim \mathcal{N}(0, 1)$  is a random Gaussian noise.

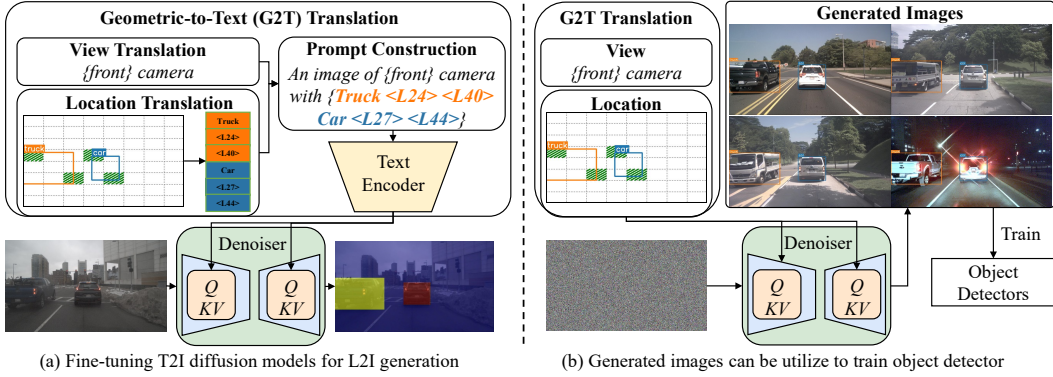


Figure 2: **Model architecture of GEODIFFUSION.** (a) GEODIFFUSION encodes various geometric conditions via text prompts to empower text-to-image (T2I) diffusion models for generalized layout-to-image generation with different geometric conditions. (b) GEODIFFUSION can generate highly realistic and diverse detection data to benefit the training of object detectors.

### 3.1.2 CONDITIONAL DIFFUSION MODELS

Different from typical generative models like GAN (Goodfellow et al., 2014) and VAE (Kingma & Welling, 2013), diffusion models (Ho et al., 2020) learn data underlying distribution by conducting a  $T$ -step denoising process from normally distributed random variables, which can also be considered as learning an inverse process of a fixed Markov Chain of length  $T$ . Given a noisy input  $x_t$  at the time step  $t \in \{1, \dots, T\}$ , the model  $\epsilon_\theta(x_t, t)$  is trained to recover its clean version  $x$  by predicting the random noise added at time step  $t$ , and the objective function can be formulated as,

$$\mathcal{L}_{DM} = \mathbb{E}_{x, \epsilon \sim \mathcal{N}(0,1), t} \|\epsilon - \epsilon_\theta(x_t, t)\|^2. \quad (1)$$

Latent diffusion models (LDM) (Rombach et al., 2022) instead perform the diffusion process in the latent space of a pre-trained Vector Quantized Variational AutoEncoder (VQ-VAE) (Van Den Oord et al., 2017). The input image  $x$  is first encoded into the latent space of VQ-VAE encoder as  $z = \mathcal{E}(x) \in \mathcal{R}^{H' \times W' \times D'}$ , and then taken as clean samples in Eqn. 1. To facilitate conditional generation, LDM further introduces a conditional encoder  $\tau_\theta(\cdot)$ , and the objective can be formulated as,

$$\mathcal{L}_{LDM} = \mathbb{E}_{\mathcal{E}(x), \epsilon \sim \mathcal{N}(0,1), t} \|\epsilon - \epsilon_\theta(z_t, t, \tau_\theta(y))\|^2, \quad (2)$$

where  $y$  in the introduced condition (e.g., text in LDM (Rombach et al., 2022)).

## 3.2 GEOMETRIC CONDITIONS AS A FOREIGN LANGUAGE

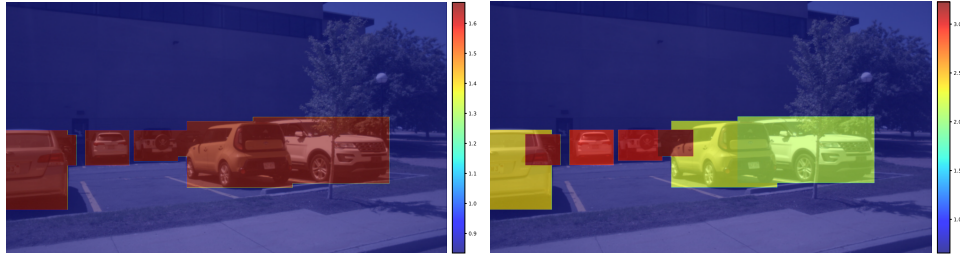
In this section, we explore encoding various geometric conditions via text prompts to utilize the pre-trained text-to-image diffusion models for better GL2I generation. As discussed in Sec. 3.1.1, a geometric layout  $L$  consists of three basic components, including the locations  $\{b_i\}$  and the semantic classes  $\{c_i\}$  of bounding boxes and the extra geometric conditions  $v$  (e.g., camera views).

**Location “Translation”.** While classes  $\{c_i\}$  and conditions  $v$  can be naturally encoded by replacing with the corresponding textual explanations (see Sec. 4.1 for details), locations  $\{b_i\}$  can not since the coordinates are continuous. Inspired by (Chen et al., 2021b), we discretize the continuous coordinates by dividing the image into a grid of **location bins**. Each location bin corresponds to a unique **location token** which will be inserted into the text encoder vocabulary of diffusion models. Therefore, each *corner* can be represented by the *location token* corresponding to the *location bin* it belongs to, and the “translation” procedure from the box locations to plain text is accomplished. See Fig. 2 for an illustration. Specifically, given a grid of size  $(H_{bin}, W_{bin})$ , the corner  $(x_0, y_0)$  is represented by the  $\sigma(x_0, y_0)$  location token as,

$$\sigma(x_0, y_0) = \mathcal{T}[y_{bin} * W_{bin} + x_{bin}], \quad (3)$$

$$x_{bin} = \lfloor x_0/W * W_{bin} \rfloor, y_{bin} = \lfloor y_0/H * H_{bin} \rfloor, \quad (4)$$

where  $\mathcal{T} = \{ \langle L_i \rangle \}_{i=1}^{H_{bin} * W_{bin}}$  is the set of location tokens, and  $\mathcal{T}[\cdot]$  is the index operation. Thus, a bounding box  $(c_i, b_i)$  is encoded into a “phrase” with three tokens as  $(c_i, \sigma(x_{i,1}, y_{i,1}), \sigma(x_{i,2}, y_{i,2}))$ .



(a) Constant re-weighting.

(b) Area re-weighting.

Figure 3: **Foreground prior re-weighting.** (a) Constant re-weighting assigns equal weight to all the bounding boxes, while (b) area re-weighting adaptively assigns higher weights to smaller boxes.

**Prompt construction.** To generate a text prompt, we can serialize multiple box “phrases” into a single sequence. In line with (Chen et al., 2021b), here we utilize a random ordering strategy by randomly shuffling the box sequence each time a layout is presented to the model. Finally, we construct the text prompts with the template, “An image of {view} camera with {boxes}”. As demonstrated in Tab. 2, this seemingly simple approach can effectively empower the T2I diffusion models for high-fidelity GL2I generation.

### 3.3 FOREGROUND PRIOR RE-WEIGHTING

The objective function presented in Eqn. 2 is designed under the assumption of a uniform prior distribution across spatial coordinates. However, due to the extreme imbalance between foreground and background, we further introduce an adaptive re-weighting mask, denoted by  $m \in \mathcal{R}^{H' \times W'}$ , to adjust the prior. This enables the model to focus more thoroughly on foreground generation and better address the challenges posed by the foreground-background imbalance.

**Constant re-weighting.** To distinguish the foreground from background regions, we employ a re-weighting strategy whereby foreground regions are assigned a weight  $w (w > 1)$ , greater than that assigned to the background regions.

**Area re-weighting.** The constant re-weighting strategy assigns equal weight to all foreground boxes, which causes larger boxes to exert a greater influence than smaller ones, thereby hindering the effective generation of small objects. To mitigate this issue, we propose an area re-weighting method to dynamically assign higher weights to smaller boxes. A comparison of this approach can be seen in Fig. 3. Finally, the re-weighting mask  $m$  can be represented as,

$$m'_{ij} = \begin{cases} w/c_{ij}^p & (i, j) \in \text{foreground} \\ 1/(H' * W')^p & (i, j) \in \text{background} \end{cases}, \quad (5)$$

$$m_{ij} = H' * W' * m'_{ij} / \sum m'_{ij}, \quad (6)$$

where  $c_{ij}$  represents the area of the bounding box to which pixel  $(i, j)$  belongs, and  $p$  is a tunable parameter. To improve the numerical stability during the fine-tuning process, Eqn. 6 normalizes the re-weighting mask  $m'$ . The benefits of this normalization process are demonstrated in Tab. 9.

**Objective function.** The final objective function of our GEODIFFUSION can be formulated as,

$$\mathcal{L}_{\text{GeoDiffusion}} = \mathbb{E}_{\mathcal{E}(x), \epsilon, t} \|\epsilon - \epsilon_{\theta}(z_t, t, \tau_{\theta}(y))\|^2 \odot m, \quad (7)$$

where  $y$  is the encoded layout as discussed in Sec. 3.2.

## 4 EXPERIMENTS

### 4.1 IMPLEMENTATION DETAILS

**Dataset.** Our experiments primarily utilize the widely used NuImages (Caesar et al., 2020) dataset, which consists of 60K training samples and 15K validation samples with high-quality bounding box annotations from 10 semantic classes. The dataset captures images from 6 camera views (*front, front left, front right, back, back left and back right*), rendering it a suitable choice for our GL2I generation problem. Moreover, to showcase the universality of GEODIFFUSION for common layout-to-image settings, we present experimental results on COCO (Lin et al., 2014; Caesar et al., 2018) in Sec. 4.3.

Table 2: **Comparison of generation fidelity on NuImages.** 1) Effectiveness: GEODIFFUSION surpasses all baselines by a significant margin, suggesting the effectiveness of adopting text-prompted geometric control. 2) Efficiency: Our GEODIFFUSION generates highly-discriminative images even under annotation-scarce circumstances. “Const.” and “ped.” suggests construction and pedestrian separately. \*: represents the real image *Oracle* baseline.

Method	Input Res.	Ep.	FID↓	Average Precision↑								
				mAP	AP <sub>50</sub>	AP <sub>75</sub>	AP <sup>m</sup>	AP <sup>l</sup>	trailer	const.	ped.	car
Oracle*	-	-	-	48.2	75.0	52.0	46.7	60.5	17.8	30.9	48.5	64.9
LostGAN	256×256	256	59.95	4.4	9.8	3.3	2.1	12.3	0.3	1.3	2.7	12.2
LAMA	256×256	256	63.85	3.2	8.3	1.9	2.0	9.4	1.4	1.0	1.3	8.8
Taming	256×256	64	62.81	4.1	9.3	3.1	1.8	12.2	0.2	2.3	2.9	13.2
Taming	256×256	256	32.84	7.4	19.0	4.8	2.8	18.8	6.0	4.0	3.0	17.3
<b>GeoDiffusion</b>	256×256	64	14.58 <sup>+18.26</sup>	15.6 <sup>+8.2</sup>	31.7	13.4	6.3	38.3	13.3	10.8	6.5	26.3
<b>GeoDiffusion</b>	512×512	64	9.58 <sup>+23.26</sup>	31.8 <sup>+24.4</sup>	62.9	28.7	27.0	53.8	21.2	27.8	18.2	46.0
<b>GeoDiffusion</b>	800×456	64	10.99 <sup>+21.85</sup>	34.5 <sup>+27.1</sup>	<b>68.5</b>	<b>30.6</b>	<b>31.1</b>	<b>54.6</b>	<b>20.4</b>	<b>29.3</b>	<b>21.6</b>	<b>48.8</b>

**Optimization.** We initialize the embedding matrix of the location tokens with 2D sine-cosine embeddings (Vaswani et al., 2017), while the remaining parameters of GEODIFFUSION are initialized with Stable Diffusion<sup>1</sup>, a pre-trained text-to-image diffusion model constructed on LDM (Rombach et al., 2022). With VQ-VAE fixed, we fine-tune all parameters of the text encoder and U-Net using AdamW (Loshchilov & Hutter, 2019) optimizer and a cosine learning rate schedule with a linear warm-up of 3000 iterations. The batch size is set to 64, and learning rates are set to  $4e^{-5}$  for U-Net and  $3e^{-5}$  for the text encoder. Layer-wise learning rate decay (Clark et al., 2020) is further adopted for the text encoder, with a decay ratio of 0.95. With 10% probability, the text prompt is replaced with a *null* text for unconditional generation. We fine-tune our GEODIFFUSION for 64 epochs, while baseline methods are trained for 256 epochs to maintain a similar training budget with the COCO recipe in (Sun & Wu, 2019; Li et al., 2021; Jahn et al., 2021). Over-fitting is observed if training baselines longer. During generation, we sample images using the PLMS (Liu et al., 2022a) scheduler for 100 steps with the classifier-free guidance (CFG) set as 5.0.

## 4.2 MAIN RESULTS

The quality of object detection data is predicated on three key criteria: the **fidelity**, **trainability**, and **generalizability**. Fidelity demands a realistic object representation while consistent with geometric layouts. Trainability concerns the usefulness of generated images for the training of object detectors. Generalizability demands the capacity to simulate uncollected, novel scenes in real datasets. In this section, we conduct a comprehensive evaluation of GEODIFFUSION for these critical areas.

### 4.2.1 FIDELITY

**Setup.** We utilize two primary metrics on the NuImages validation set to evaluate Fidelity. The perceptual quality is measured with the Frechet Inception Distance (FID)<sup>2</sup> (Heusel et al., 2017), while consistency between generated images and geometric layouts is evaluated via reporting the COCO-style average precision (Lin et al., 2014) using a pre-trained object detector, which is similar to the YOLO score in LAMA (Li et al., 2021). A Mask R-CNN<sup>3</sup> (He et al., 2017) model pre-trained on the NuImages training set is used to make predictions on generated images. These predictions are subsequently compared with the corresponding ground truth annotations. We further provide the detection results on real validation images as the *Oracle* baseline in Tab. 2 for reference.

**Discussion.** As in Tab. 2, GEODIFFUSION surpasses all the baselines in terms of perceptual quality (FID) and layout consistency (mAP) with 256×256 input, accompanied by a **4× acceleration** in the training procedure, which indicates that text-prompted geometric control is an effective approach. Moreover, the simplicity of LDM empowers GEODIFFUSION to generate higher-resolution images

<sup>1</sup><https://huggingface.co/runwayml/stable-diffusion-v1-5>

<sup>2</sup>Images are all resize into 256 × 256 before evaluation.

<sup>3</sup><https://github.com/open-mmlab/mmdetection3d/tree/master/configs/nuimages>

Table 3: **Comparison of generation trainability on NuImages.** 1) GEODIFFUSION is **the only** layout-to-image method showing consistent improvements over almost all classes, 2) especially on rare ones, verifying that GEODIFFUSION indeed helps relieve annotation scarcity during detector training. By default the  $800\times 456$  GEODIFFUSION variant is utilized for all trainability evaluation.

Method	mAP	car	truck	trailer	bus	const.	bicycle	motorcycle	ped.	cone	barrier
Real only	36.9	52.9	40.9	15.5	42.1	24.0	44.7	46.7	<b>31.3</b>	<b>32.5</b>	38.9
LostGAN	35.6 <sup>-1.3</sup>	51.7	39.6	12.9	41.3	22.7	42.4	45.6	30.0	31.6	37.9
LAMA	35.6 <sup>-1.3</sup>	51.7	39.2	14.3	40.5	22.9	43.2	44.9	30.0	31.3	38.3
Taming	35.8 <sup>-1.1</sup>	51.9	39.3	14.7	41.1	22.4	43.1	45.4	30.4	31.6	38.1
<b>GeoDiffusion</b>	<b>38.3<sup>+1.4</sup></b>	<b>53.2</b>	<b>43.8</b>	<b>18.3</b>	<b>45.0</b>	<b>27.6</b>	<b>45.3</b>	<b>46.9</b>	30.5	32.1	<b>39.8</b>

with minimal modifications. With  $800\times 456$  input, GEODIFFUSION gets **10.99 FID** and **34.5 mAP**, marking a significant progress towards bridging the gap with real images, especially for the large object generation (54.6 vs. 60.5 AP<sup>l</sup>). Fig. 1a provides a qualitative comparison of generated images. GEODIFFUSION generates images that are more realistic and tightly fitting to the bounding boxes, making it feasible to enhance object detector training, as later discussed in Sec. 4.2.2.

We further report the class-wise AP of the top-2 frequent (*i.e.*, car and pedestrian) and rare classes (*e.g.*, trailer and construction, occupying only 1.5% of training annotations) in Tab. 2. We observe that GEODIFFUSION performs relatively well in annotation-scarce scenarios, achieving higher trailer AP even than the *Oracle* baseline and demonstrating ability to generate highly-discriminative objects even with limited annotations. However, similar to previous methods, GEODIFFUSION encounters difficulty with high variance (*e.g.*, pedestrians) and occlusion (*e.g.*, cars) circumstances, highlighting the areas where further improvements are still needed.

#### 4.2.2 TRAINABILITY

In this section, we investigate the potential benefits of GEODIFFUSION-generated images for object detector training. To this end, we utilize the generated images as augmented samples during the training of an object detector to further evaluate the efficacy of our proposed model.

**Setup.** Taking data annotations of the NuImages training set as input, we first filter bounding boxes smaller than 0.2% of the image area, then augment the bounding boxes by randomly flipping with 0.5 probability and shifting no more than 256 pixels. The generated images are considered augmented samples and combined with the real images to expand the training data. A Faster R-CNN (Ren et al., 2015) initialized with ImageNet pre-trained weights is then trained using the standard  $1\times$  schedule and evaluated on the validation set.

**Discussion.** As reported in Tab. 3, **for the first time**, we demonstrate that the generated images of layout-to-image models can be advantageous to object detector training. Our GEODIFFUSION is the only method to achieve a consistent improvement for almost all semantic classes, which is much more obvious for rare classes (*e.g.*, **+2.8** for trailer, **+3.6** for construction and **+2.9** for bus, the top-3 most rare classes occupying only 7.2% of the training annotations), revealing that GEODIFFUSION indeed contributes by relieving annotation scarcity of rare classes, thanks to the data efficiency as discussed in Sec. 4.2.1.

**Necessity of real data** brought by GEODIFFUSION is further verified by varying the amount of real data usage. We randomly sample 10%, 25%, 50%, and 75% of the real training set, and each subset is utilized to train a Faster R-CNN together with generated images separately. We consider two augmentation modes, 1) *Full*: GEODIFFUSION trained on the full training set is utilized to augment each subset as in Tab. 3. 2) *Subset*: we re-train GEODIFFUSION with each real data subset separately, which are then used to augment the corresponding subset. The number of gradient steps are maintained unchanged for each pair experiment with the same amount of real data by enlarging the batch size adaptively. As shown in Fig. 1b, GEODIFFUSION achieves consistent improvement over different real training data budgets. The more scarce real data is, the more significant improvement GEODIFFUSION achieves, as in Tab. 8, sufficiently revealing that generated images do help ease the data necessity. With only 75% of real data, the detector can perform comparably with the full real dataset by augmenting with GEODIFFUSION.



Figure 4: **Visualization of generation generalizability on NuImages.** From left to right, we present the query layout, the generated images conditional on the original, the flipped and shifted layouts. GEODIFFUSION performs surprisingly well on the real-life collected geometric layouts (2nd & 3rd columns), while revealing superior robustness for out-of-distribution situations (4th column).

#### 4.2.3 GENERALIZABILITY

In this section, we evaluate the generalizability and robustness of GEODIFFUSION on novel layouts unseen during fine-tuning.

**Setup.** To guarantee that the input geometric layouts are reasonable (*e.g.*, no violation of the basic physical laws like objects closer to the camera seem larger), we first randomly sample a query layout from the validation set, based on which we further disturb the query bounding boxes with 1) *flipping* and 2) *random shifting* for no more than 256 pixels along each spatial dimension, the exact same recipe we utilize in Sec. 4.2.2 for bounding box augmentation. Check more generalizability analysis for OoD circumstances in Appendix C.

**Discussion.** We visualize the generated results in Fig. 4. GEODIFFUSION demonstrates superior generalizability to conduct generation on the novel unseen layouts. Specifically, GEODIFFUSION performs surprisingly well given geometric layouts collected in real-world scenarios and its corresponding flip variant (2nd & 3rd columns in Fig. 4). Moreover, we observe GEODIFFUSION demonstrates strong robustness to layout augmentation even if the resulting layouts are out-of-distribution. For example, GEODIFFUSION learns to generate a downhill for boxes lower than current grounding plane (*e.g.*, the *shift* column of the 1st row), or an uphill for bounding boxes higher than the current grounding plane (*e.g.*, *shift* of 2nd & 3rd rows) to maintain consistent with given geometric layouts. The remarkable robustness also convinces us to adopt bounding box augmentation for the object detector training in Sec. 4.2.2 to further increase annotation diversity of the augmented training set.

### 4.3 UNIVERSALITY

**Setup.** To demonstrate the universality of GEODIFFUSION, we further conduct experiments on COCO-Stuff dataset (Caesar et al., 2018) following common practices (Li et al., 2021; 2023a). We keep hyper-parameters consistent with Sec. 4.1, except we utilize the DPM-Solver (Lu et al., 2022) scheduler for 50-step denoising with the classifier-free guidance ratio set as 4.0 during generation.

**Fidelity.** We ignore object annotations covering less than 2% of the image area, and only images with 3 to 8 objects are utilized during validation following Li et al. (2021). Similarly with Sec. 4.2.1, we report FID and YOLO score (Li et al., 2021) to evaluate perceptual quality and layout consistency respectively. As shown in Tab. 4, GEODIFFUSION outperforms all baselines in terms of both the FID and YOLO score with significant efficiency, consistent with our observation on NuImages in Tab. 2, revealing the universality of GEODIFFUSION. More qualitative comparison is provided in Fig. 9.

**Trainability.** We then utilize GEODIFFUSION to augment COCO detection training set following the exact same box augmentation pipeline in Sec. 4.2.2. As demonstrated in Tab. 5, GEODIFFUSION also achieves significant improvement on COCO validation set, suggesting that GEODIFFUSION can indeed generate high-quality detection data regardless of domains.



Table 4: **Comparison of generation fidelity on COCO.** †: our re-implementation.

Method	Epoch	FID↓	mAP↑	AP <sub>50</sub> ↑	AP <sub>75</sub> ↑
<b>256×256</b>					
LostGAN	200	42.55	9.1	15.3	9.8
LAMA	200	31.12	13.4	19.7	14.9
CAL2IM	200	29.56	10.0	14.9	11.1
Taming	68+60	33.68	-	-	-
TwFA	300	22.15	-	28.2	20.1
<b>512×512</b>					
Frido	200	37.14	17.2	-	-
L.Diffusion†	180	22.65	14.9	27.5	14.9
<b>GeoDiffusion</b>	<b>60</b>	<b>20.16</b>	<b>29.1</b>	<b>38.9</b>	<b>33.6</b>
ReCo†	100	29.69	18.8	33.5	19.7
ControlNet†	60	28.14	25.2	<b>46.7</b>	22.7
L.Diffuse†	60	22.20	11.4	23.1	10.1
GLIGEN	86	21.04	22.4	36.5	24.1
<b>GeoDiffusion</b>	<b>60</b>	<b>18.89</b>	<b>30.6</b>	41.7	<b>35.6</b>

Table 5: **Comparison of trainability on COCO.** Indeed, GEODIFFUSION can benefit detection training regardless of domains.

Method	mAP	AP <sub>50</sub>	AP <sub>75</sub>	AP <sup>m</sup>	AP <sup>l</sup>
Real only	37.3	58.2	40.8	40.7	48.2
LAMA	35.3	54.8	38.2	38.6	45.7
L.Diffusion	36.5	57.0	39.5	39.7	47.5
L.Diffuse	36.6	57.4	39.5	40.0	47.4
GLIGEN	36.8	57.6	39.9	40.3	47.9
<b>GeoDiffusion</b>	<b>38.4</b>	<b>58.5</b>	<b>42.4</b>	<b>42.1</b>	<b>50.3</b>

Table 6: **Comparison of COCO inpainting.** Our GEODIFFUSION can achieve significant improvement over the vanilla T2I baseline.

Method	mAP	AP <sub>50</sub>	AP <sub>75</sub>
Stable Diffusion	17.6	23.2	20.0
<b>GeoDiffusion</b>	<b>19.0<sup>+1.4</sup></b>	<b>26.2<sup>+3.0</sup></b>	<b>21.6<sup>+1.6</sup></b>

Figure 5: **Visualization of image inpainting on COCO.** Due to the existence of multiple people, Stable Diffusion cannot properly deal with the inpainting request, while GEODIFFUSION solves by successfully understanding location of missing areas thanks to the text-prompted geometric control.

**Inpainting.** We further explore applicability of inpainting for GEODIFFUSION. Similarly with the fidelity evaluation, we randomly mask one object for each image of COCO detection validation set, and ask models to inpaint missing areas. A YOLO detector is adopted to evaluate recognizability of inpainted results similarly with YOLO score following Li et al. (2023a). GEODIFFUSION surpasses SD baseline remarkably, as in Tab. 6. We further provide a qualitative comparison in Fig. 5, where GEODIFFUSION can successfully deal with the sophisticated image synthesis requirement.

#### 4.4 ABLATION STUDY

In this section, we conduct ablation studies on the essential components of our GEODIFFUSION. Check detailed experiment setups, more ablations and discussions in Appendix B and C.

**Location grid size** ( $H_{bin}, W_{bin}$ ) is ablated in Tab. 7. A larger grid size can achieve consistent improvement for both the perceptual quality and the layout consistency. Indeed, a larger grid size stands for a smaller bin size and less coordinate discretization error, and thus, a more accurate encoding of geometric layouts. Due to the restriction of hardware resources, the most fine-grained grid size we adopt is  $2 \times 2$  pixels per bin.

Table 7: **Ablations on location grid size.**

Foreground re-weighting is not adopted here. Default settings are marked in gray.

Grid size ( $H_{bin}, W_{bin}$ )	# Pixels / bin	FID↓	mAP↑
100×57	8×8	14.94	20.8
200×114	4×4	11.83	21.4
<b>400×228</b>	<b>2×2</b>	<b>11.63</b>	<b>23.7</b>

## 5 CONCLUSION

This paper proposes GEODIFFUSION, an embarrassing simple architecture with the text-prompted geometric control to empower pre-trained text-to-image diffusion models for object detection data generation. GEODIFFUSION is demonstrated effective in generating realistic images that conform to specified geometric layouts, as evidenced by the extensive experiments that reveal high fidelity, enhanced trainability in annotation-scarce scenarios, and improved generalizability to novel scenes.

**Acknowledgement.** We gratefully acknowledge the support of MindSpore, CANN (Compute Architecture for Neural Networks) and Ascend AI Processor used for this research.

## REFERENCES

- Christopher Bowles, Liang Chen, Ricardo Guerrero, Paul Bentley, Roger Gunn, Alexander Hammers, David Alexander Dickie, Maria Valdés Hernández, Joanna Wardlaw, and Daniel Rueckert. Gan augmentation: Augmenting training data using generative adversarial networks. *arXiv preprint arXiv:1810.10863*, 2018. 1
- Holger Caesar, Jasper Uijlings, and Vittorio Ferrari. Coco-stuff: Thing and stuff classes in context. In *CVPR*, 2018. 5, 8, 18
- Holger Caesar, Varun Bankiti, Alex H Lang, Sourabh Vora, Venice Erin Liong, Qiang Xu, Anush Krishnan, Yu Pan, Giancarlo Baldan, and Oscar Beijbom. nuscenes: A multimodal dataset for autonomous driving. In *CVPR*, 2020. 2, 5, 17
- Kai Chen, Lanqing Hong, Hang Xu, Zhenguo Li, and Dit-Yan Yeung. Multisiam: Self-supervised multi-instance siamese representation learning for autonomous driving. In *ICCV*, 2021a. 16
- Kai Chen, Zhili Liu, Lanqing Hong, Hang Xu, Zhenguo Li, and Dit-Yan Yeung. Mixed autoencoder for self-supervised visual representation learning. In *CVPR*, 2023a. 16
- Kai Chen, Chunwei Wang, Kuo Yang, Jianhua Han, Lanqing Hong, Fei Mi, Hang Xu, Zhengying Liu, Wenyong Huang, Zhenguo Li, Dit-Yan Yeung, Lifeng Shang, Xin Jiang, and Qun Liu. Gaining wisdom from setbacks: Aligning large language models via mistake analysis. *arXiv preprint arXiv:2310.10477*, 2023b. 2
- Shoufa Chen, Peize Sun, Yibing Song, and Ping Luo. Diffusiondet: Diffusion model for object detection. *arXiv preprint arXiv:2211.09788*, 2022. 16
- Ting Chen, Saurabh Saxena, Lala Li, David J Fleet, and Geoffrey Hinton. Pix2seq: A language modeling framework for object detection. *arXiv preprint arXiv:2109.10852*, 2021b. 4, 5
- Jiaxin Cheng, Xiao Liang, Xingjian Shi, Tong He, Tianjun Xiao, and Mu Li. Layoutdiffuse: Adapting foundational diffusion models for layout-to-image generation. *arXiv preprint arXiv:2302.08908*, 2023. 2, 3, 15
- Kevin Clark, Minh-Thang Luong, Quoc V Le, and Christopher D Manning. Electra: Pre-training text encoders as discriminators rather than generators. In *ICLR*, 2020. 6
- Nikita Dvornik, Julien Mairal, and Cordelia Schmid. Modeling visual context is key to augmenting object detection datasets. In *ECCV*, 2018. 2, 3
- Ruiyuan Gao, Kai Chen, Enze Xie, Lanqing Hong, Zhenguo Li, Dit-Yan Yeung, and Qiang Xu. Magicdrive: Street view generation with diverse 3d geometry control. *arXiv preprint arXiv:2310.02601*, 2023. 15
- Yunhao Ge, Jiashu Xu, Brian Nlong Zhao, Laurent Itti, and Vibhav Vineet. Dall-e for detection: Language-driven context image synthesis for object detection. *arXiv preprint arXiv:2206.09592*, 2022. 3
- Golnaz Ghiasi, Yin Cui, Aravind Srinivas, Rui Qian, Tsung-Yi Lin, Ekin D Cubuk, Quoc V Le, and Barret Zoph. Simple copy-paste is a strong data augmentation method for instance segmentation. In *CVPR*, 2021. 3
- Ian J Goodfellow, Jean Pouget-Abadie, Mehdi Mirza, Bing Xu, David Warde-Farley, Sherjil Ozair, Aaron Courville, and Yoshua Bengio. Generative adversarial networks. *arXiv preprint arXiv:1406.2661*, 2014. 2, 4
- Jianhua Han, Xiwen Liang, Hang Xu, Kai Chen, Lanqing Hong, Chaoqiang Ye, Wei Zhang, Zhenguo Li, Xiaodan Liang, and Chunjing Xu. Soda10m: Towards large-scale object detection benchmark for autonomous driving. *arXiv preprint arXiv:2106.11118*, 2021. 2

- Kaiming He, Georgia Gkioxari, Piotr Dollár, and Ross Girshick. Mask r-cnn. In *ICCV*, 2017. 6
- Ruifei He, Shuyang Sun, Xin Yu, Chuhui Xue, Wenqing Zhang, Philip Torr, Song Bai, and Xiaojuan Qi. Is synthetic data from generative models ready for image recognition? *arXiv preprint arXiv:2210.07574*, 2022. 2
- Sen He, Wentong Liao, Michael Ying Yang, Yongxin Yang, Yi-Zhe Song, Bodo Rosenhahn, and Tao Xiang. Context-aware layout to image generation with enhanced object appearance. In *CVPR*, 2021. 2
- Amir Hertz, Ron Mokady, Jay Tenenbaum, Kfir Aberman, Yael Pritch, and Daniel Cohen-Or. Prompt-to-prompt image editing with cross attention control. *arXiv preprint arXiv:2208.01626*, 2022. 2
- Martin Heusel, Hubert Ramsauer, Thomas Unterthiner, Bernhard Nessler, and Sepp Hochreiter. Gans trained by a two time-scale update rule converge to a local nash equilibrium. In *NeurIPS*, 2017. 6
- Jonathan Ho, Ajay Jain, and Pieter Abbeel. Denoising diffusion probabilistic models. In *NeurIPS*, 2020. 2, 3, 4
- Manuel Jahn, Robin Rombach, and Björn Ommer. High-resolution complex scene synthesis with transformers. *arXiv preprint arXiv:2105.06458*, 2021. 1, 3, 6
- Yuanfeng Ji, Zhe Chen, Enze Xie, Lanqing Hong, Xihui Liu, Zhaoqiang Liu, Tong Lu, Zhenguo Li, and Ping Luo. Ddp: Diffusion model for dense visual prediction. *arXiv preprint arXiv:2303.17559*, 2023. 16
- Diederik P Kingma and Max Welling. Auto-encoding variational bayes. *arXiv preprint arXiv:1312.6114*, 2013. 2, 4
- Alexander Kirillov, Eric Mintun, Nikhila Ravi, Hanzi Mao, Chloe Rolland, Laura Gustafson, Tete Xiao, Spencer Whitehead, Alexander C Berg, Wan-Yen Lo, et al. Segment anything. *arXiv preprint arXiv:2304.02643*, 2023. 3
- Kaicen Li, Kai Chen, Haoyu Wang, Lanqing Hong, Chaoqiang Ye, Jianhua Han, Yukuai Chen, Wei Zhang, Chunjing Xu, Dit-Yan Yeung, et al. Coda: A real-world road corner case dataset for object detection in autonomous driving. *arXiv preprint arXiv:2203.07724*, 2022. 2
- Yuheng Li, Haotian Liu, Qingyang Wu, Fangzhou Mu, Jianwei Yang, Jianfeng Gao, Chunyuan Li, and Yong Jae Lee. Gligen: Open-set grounded text-to-image generation. *arXiv preprint arXiv:2301.07093*, 2023a. 2, 3, 8, 9, 15
- Zejian Li, Jingyu Wu, Immanuel Koh, Yongchuan Tang, and Lingyun Sun. Image synthesis from layout with locality-aware mask adaption. In *ICCV*, 2021. 3, 6, 8
- Ziyi Li, Qinye Zhou, Xiaoyun Zhang, Ya Zhang, Yanfeng Wang, and Weidi Xie. Open-vocabulary object segmentation with diffusion models. *ICCV*, 2023b. 3, 16
- Tsung-Yi Lin, Michael Maire, Serge Belongie, James Hays, Pietro Perona, Deva Ramanan, Piotr Dollár, and C Lawrence Zitnick. Microsoft coco: Common objects in context. In *ECCV*, 2014. 5, 6
- Luping Liu, Yi Ren, Zhijie Lin, and Zhou Zhao. Pseudo numerical methods for diffusion models on manifolds. *arXiv preprint arXiv:2202.09778*, 2022a. 6
- Zhili Liu, Jianhua Han, Kai Chen, Lanqing Hong, Hang Xu, Chunjing Xu, and Zhenguo Li. Task-customized self-supervised pre-training with scalable dynamic routing. In *AAAI*, 2022b. 16
- Zhili Liu, Kai Chen, Yifan Zhang, Jianhua Han, Lanqing Hong, Hang Xu, Zhenguo Li, Dit-Yan Yeung, and James Kwok. Geom-erasing: Geometry-driven removal of implicit concept in diffusion models. *arXiv preprint arXiv:2310.05873*, 2023. 15
- Ilya Loshchilov and Frank Hutter. Decoupled weight decay regularization. In *ICLR*, 2019. 6

- Cheng Lu, Yuhao Zhou, Fan Bao, Jianfei Chen, Chongxuan Li, and Jun Zhu. Dpm-solver: A fast ode solver for diffusion probabilistic model sampling in around 10 steps. *arXiv preprint arXiv:2206.00927*, 2022. 8
- Alex Nichol, Prafulla Dhariwal, Aditya Ramesh, Pranav Shyam, Pamela Mishkin, Bob McGrew, Ilya Sutskever, and Mark Chen. Glide: Towards photorealistic image generation and editing with text-guided diffusion models. *arXiv preprint arXiv:2112.10741*, 2021. 2
- Alexander Quinn Nichol and Prafulla Dhariwal. Improved denoising diffusion probabilistic models. In *ICML*, 2021. 2
- Luis Perez and Jason Wang. The effectiveness of data augmentation in image classification using deep learning. *arXiv preprint arXiv:1712.04621*, 2017. 1
- Aditya Ramesh, Prafulla Dhariwal, Alex Nichol, Casey Chu, and Mark Chen. Hierarchical text-conditional image generation with clip latents. *arXiv preprint arXiv:2204.06125*, 2022. 2
- Shaoqing Ren, Kaiming He, Ross Girshick, and Jian Sun. Faster R-CNN: Towards real-time object detection with region proposal networks. In *NeurIPS*, 2015. 1, 7
- Md Alimoor Reza, Akshay U Naik, Kai Chen, and David J Crandall. Automatic annotation for semantic segmentation in indoor scenes. In *IROS*, 2019. 16
- Md Alimoor Reza, Kai Chen, Akshay Naik, David J Crandall, and Soon-Heung Jung. Automatic dense annotation for monocular 3D scene understanding. In *IEEE Access*, 2020. 16
- Robin Rombach, Andreas Blattmann, Dominik Lorenz, Patrick Esser, and Björn Ommer. High-resolution image synthesis with latent diffusion models. In *CVPR*, 2022. 2, 3, 4, 6
- Chitwan Saharia, William Chan, Huiwen Chang, Chris Lee, Jonathan Ho, Tim Salimans, David Fleet, and Mohammad Norouzi. Palette: Image-to-image diffusion models. In *SIGGRAPH*, 2022a. 2
- Chitwan Saharia, Jonathan Ho, William Chan, Tim Salimans, David J Fleet, and Mohammad Norouzi. Image super-resolution via iterative refinement. In *PAMI*, 2022b. 2
- Jiaming Song, Chenlin Meng, and Stefano Ermon. Denoising diffusion implicit models. *arXiv preprint arXiv:2010.02502*, 2020. 2
- Wei Sun and Tianfu Wu. Image synthesis from reconfigurable layout and style. In *ICCV*, 2019. 2, 6
- Hugo Touvron, Thibaut Lavril, Gautier Izacard, Xavier Martinet, Marie-Anne Lachaux, Timothée Lacroix, Baptiste Rozière, Naman Goyal, Eric Hambro, Faisal Azhar, Aurelien Rodriguez, Armand Joulin, Edouard Grave, and Guillaume Lample. Llama: Open and efficient foundation language models. *arXiv preprint arXiv:2302.13971*, 2023. 2
- Aaron Van Den Oord, Oriol Vinyals, et al. Neural discrete representation learning. In *NeurIPS*, 2017. 4
- Ashish Vaswani, Noam Shazeer, Niki Parmar, Jakob Uszkoreit, Llion Jones, Aidan N Gomez, Łukasz Kaiser, and Illia Polosukhin. Attention is all you need. In *NeurIPS*, 2017. 6
- Su Wang, Chitwan Saharia, Ceslee Montgomery, Jordi Pont-Tuset, Shai Noy, Stefano Pellegrini, Yasumasa Onoe, Sarah Laszlo, David J Fleet, Radu Soricut, et al. Imagen editor and editbench: Advancing and evaluating text-guided image inpainting. *arXiv preprint arXiv:2212.06909*, 2022. 2
- Weijia Wu, Yuzhong Zhao, Hao Chen, Yuchao Gu, Rui Zhao, Yefei He, Hong Zhou, Mike Zheng Shou, and Chunhua Shen. Datasetdm: Synthesizing data with perception annotations using diffusion models. *arXiv preprint arXiv:2308.06160*, 2023. 3, 16
- Zhengyuan Yang, Jianfeng Wang, Zhe Gan, Linjie Li, Kevin Lin, Chenfei Wu, Nan Duan, Zicheng Liu, Ce Liu, Michael Zeng, and Lijuan Wang. Reco: Region-controlled text-to-image generation. In *CVPR*, 2023. 3

- Lvmin Zhang, Anyi Rao, and Maneesh Agrawala. Adding conditional control to text-to-image diffusion models. In *ICCV*, 2023. 15
- Bo Zhao, Lili Meng, Weidong Yin, and Leonid Sigal. Image generation from layout. In *CVPR*, 2019. 2
- Hanqing Zhao, Dianmo Sheng, Jianmin Bao, Dongdong Chen, Dong Chen, Fang Wen, Lu Yuan, Ce Liu, Wenbo Zhou, Qi Chu, et al. X-paste: Revisit copy-paste at scale with clip and stablediffusion. *arXiv preprint arXiv:2212.03863*, 2022. 2, 3
- LIU Zhili, Kai Chen, Jianhua Han, HONG Lanqing, Hang Xu, Zhenguo Li, and James Kwok. Task-customized masked autoencoder via mixture of cluster-conditional experts. In *ICLR*, 2023. 16

Table 8: **Necessity of real data.** GEODIFFUSION achieves consistent improvement over various real data budget, which is more significant on more annotation-scarce subset.

Method	10%	25%	50%	75%
w/o GeoDiffusion	24.6	30.0	33.6	35.8
w/ GeoDiffusion (Subset)	27.8 <sup>+3.2</sup>	33.1 <sup>+3.1</sup>	35.7 <sup>+2.1</sup>	37.2 <sup>+1.4</sup>
w/ GeoDiffusion (Full)	30.1 <sup>+5.5</sup>	33.3 <sup>+3.3</sup>	35.8 <sup>+2.2</sup>	37.3 <sup>+1.5</sup>

## APPENDIX

### A MORE EXPERIMENTS

**Detailed results of real data necessity.** As discussed in Sec. 4.2.2, the usage of the augmented dataset generated by GEODIFFUSION can significantly ease the necessity of real data during object detector training in different real training data budget ranging from 10% to 75%. We provide detailed experimental results in Tab. 8.

### B MORE ABLATION STUDY

**Setup.** We conduct ablation studies mainly with respect to fidelity and report the FID and COCO-style mAP following the exact same setting in Sec. 4.2.1. Specifically, the input resolution is set to be  $800 \times 456$ , and our GEODIFFUSION is fine-tuned for 64 epochs on the NuImages training set. The optimization recipe is maintained the same with Sec. 4.1.

**Pre-trained text encoder.** To verify the necessity of using pre-trained text encoder, we only initialize the VQ-VAE and U-Net with Stable Diffusion, while randomly initializing the parameters of the text encoder for comparison following the official implementation of LDM. As demonstrated in Tab. 9, the default GEODIFFUSION significantly surpasses the variant without the pre-trained text encoder by 4.82 FID and 14.2 mAP, suggesting that with a proper “translation”, the pre-trained text encoder indeed possesses transferability to encode geometric conditions and enable T2I diffusion models for high-quality object detection data generation.

**Foreground prior re-weighting.** In Tab. 9, we study the effect of foreground re-weighting. Adopting the constant re-weighting obtains a significant +3.4 mAP improvement (27.1 vs. 23.7), which further increases to 30.1 mAP with the help of area re-weighting, revealing that foreground modeling is essential for object detection data generation. Note that the mAP improvement comes at a cost of a minor FID increase (11.99 vs. 11.63) since we manually adjust the prior distribution over spatial locations. We further verify the effectiveness of mask normalization in Eqn. 6, which can significantly decrease FID while maintaining the mAP value almost unchanged (5th & 7th rows), suggesting that mask normalization is mainly beneficial for fine-tuning the diffusion models after foreground re-weighting.

**Importance of camera views.** In this work, camera views are considered as an example to demonstrate that text can be indeed used as a universal encoding for various geometric conditions. A toy example is provided in Fig. 1a, fully proving text indeed has potential to decouple various conditions with a unified representation. Moreover, we further build a GEODIFFUSION *w/o camera views*, significantly worse than the default GEODIFFUSION as shown in Tab. 10, revealing the importance of adopting camera views.

**Location tokens.** As stated in Sec. 4.1, location tokens are first initialized with 2D sine-cosine embeddings and then fine-tuned together with the whole model. We further train a GEODIFFUSION *with fixed location tokens*, which performs worse than the default GEODIFFUSION as in Tab. 10.

Pre-trained text encoder	Constant $w$	Area $p$	Norm	FID↓	mAP↑
✗	1.0 (no re-weight)	0	✓	16.45	9.5
✓	1.0 (no re-weight)	0	✓	<b>11.63</b>	23.7
✓	2.0	0	✓	11.77	27.1
✓	4.0	0	✓	12.90	26.2
✓	<b>2.0</b>	<b>0.2</b>	✓	11.99	<b>30.1</b>
✓	2.0	0.4	✓	14.99	28.3
✓	2.0	0.2	✗	14.76	29.8

Table 9: **Ablations on the text encoder and foreground re-weighting.** The best result is achieved when both constant and area re-weighting are adopted. Default settings are marked in gray .

Camera views	Learned Location Token	FID↓	mAP↑
✓	✓	<b>10.99</b>	<b>34.5</b>
✗	✓	11.95	31.0
✓	✗	14.36	27.7

Table 10: **Ablations on camera views and locatuon tokens.** Default settings are marked in gray .

## C MORE DISCUSSIONS

**More generalizability analysis.** We first provide more visualization for augmented bounding boxes similarly with Sec. 4.2.3. As shown in Fig. 6, GEODIFFUSION demonstrates superior robustness towards the real-life collected and augmented layouts, convincing us to flexibly perform bounding box augmentation for more diverse augmented set.

We further explore the generalizability for totally out-of-distribution (OoD) layouts (*i.e.*, unseen boxes and classes) in Fig. 7. GEODIFFUSION performs surprisingly well for OoD bounding boxes (*e.g.*, unusually large bounding boxes with only one object in an entire image) as in Fig. 7a, but still suffers from unseen classes as in Fig. 7b, probably due to the inevitable forgetting during fine-tuning. Parameter-efficient fine-tuning (PEFT) (Cheng et al., 2023; Li et al., 2023a) might ease the problem but at a cost of generation quality as shown in Tab. 4. Considering our focus is to generate high-quality detection data to augment real data, fidelity and trainability are considered as the primary criteria in this work.

**Simplicity** of GEODIFFUSION emerges especially when extended to multi-conditional generation, where usually more than 3 conditions are considered for a single generative model simultaneously (*e.g.*, the 3D geometric control (Gao et al., 2023) and implicit concept removal (Liu et al., 2023)). Different from ControlNet (Zhang et al., 2023) requiring *different copies of parameters for different conditions*, GEODIFFUSION utilizes the text prompt as a *shared and universal encoding* of various geometric controls, which is more scalable, deployable and computationally efficient.

**Location translation via text.** Although seeming cumbersome, the main purpose is to adopt **text as a universal encoding** for various geometric conditions and empower pre-trained T2I DMs for detection data generation, which, however, might not support the dense pixel-level semantic control currently (*e.g.*, mask-to-image generation).

**Extendibility.** Thus, GEODIFFUSION can be extended to other descriptions as long as they can be discretized (*e.g.*, locations) or represented by text prompts (*e.g.*, car colors).

**Adaptation of the Foreground Re-weighting with existing methods** can be beneficial if applicable. However, existing methods utilize specific modules to encoder layouts (*e.g.*, RoI Align to take foreground features only in LAMA), suggesting that specific designs might still be required for the adaptation, which is beyond the scope of this work.



Figure 6: **More visualization of generation generalizability for augmented bounding boxes.** GEODIFFUSION demonstrates superior performance for real-life collected and augmented layouts, consistently with what we have observed in Fig. 4.



(a) **Out-of-distribution bounding boxes.**



(b) **Out-of-distribution classes.**

Figure 7: **More visualization of generation generalizability for totally out-of-distribution layouts.** Our GEODIFFUSION demonstrates strong robustness towards (a) OoD bounding boxes, but suffers from (b) unseen classes (*i.e.*, *dog*, *cat* and *tiger*) during fine-tuning.

**Limitation.** We notice that the GEODIFFUSION-generated images by now can only contribute as augmented samples to train object detectors together with the real images. It is appealing to train detectors with generated images solely, and we will explore it in the future work. We hope that our simple yet effective method can bring researchers’ attention to large-scale object detection *dataset* generation with more flexible and controllable generative models. The incorporation among GEODIFFUSION with annotation generation (Reza et al., 2019; 2020) and even perception-based methods (Wu et al., 2023; Li et al., 2023b) is also appealing, which will be explored in the future.

Meanwhile, more flexible usage of the generated images beyond data augmentation, especially incorporation with generative pre-training (Chen et al., 2023a; Zhili et al., 2023), contrastive learning (Chen et al., 2021a; Liu et al., 2022b) and DM-based perception models (Chen et al., 2022; Ji et al., 2023), is an appealing future research direction.

## D MORE QUALITATIVE COMPARISON

We provide more qualitative comparison on NuImages and COCO-Stuff datasets in Fig. 8 and 9 respectively.





Figure 8: More qualitative comparison on the NuImages (Caesar et al., 2020) dataset.



Figure 9: **More qualitative comparison on the COCO-Stuff (Caesar et al., 2018) dataset.** Our GEODIFFUSION can successfully deal with both outdoor (1st-4th rows) and indoor (5th-7th rows) scenes, while demonstrating significant fidelity and diversity (4th-6th columns are generated images by GEODIFFUSION under three different random seeds).